

THE NEW BAMFIELDER

Understanding is essential to reconciliation & understanding is everyone's responsibility.

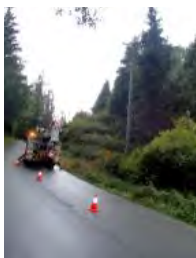
1 October 2023

www.bamfielder.ca

No. 148/75



Bamfield Focus! Our Federal MP **Gord Johns** and Provincial MLA Minister **Josie Osborne** met with Bamfielders at the BMSR Rix Centre on 11 September. They invited topics for discussion. Housing received most attention. The message was 'cooperation.' Cowichan Valley is an example of separate units coming together to advance housing. Again, we heard the importance of having flexibility in zoning built into our community plan and the new possibilities afforded by BC's encouraging greater housing density. Response to Emergency Response issues was vague and focused on road access. Infrastructure emphasized parking. Apparently a strong point was our ample water supply, even as Vancouver Island experiences drought. Mental health support issues, that this naïve reporter had never considered, were outlined with local concern. Both John and Josie encouraged us to use their good offices to explore opportunities. A good meeting! *L. Druehl*



Power outage a drought result? On 12 September a hemlock succumbed to gravity near the upper Anacla turnoff. Photo R. Hopkins

Truth and Reconciliation at The Bamfield School, 29 September was memorable but scarcely attended. **Robin Schmitt** introduced the topic and passed the microphone to **Stella Peters**. Stella talked about the disruption Residential School caused families, the effect being multigenerational. She spoke of the importance of longhouses and totems and reverence to Mother Earth. She recounted that her brother and sister had been snatched away when she was 8 (she was reunited with her brother when she was 34 and her sister when she was 49). One young student asked her a question [I have no idea how one could answer, but a question that deserved an answer]. Robin presented a video that, in the school kids' voice, explained the symbolism of the Survivors' Flag flying outside the school. A burger lunch, flipped by **Kyle Lindsey** (who, with family has left us) was served on the school lawn. *L. Druehl*



A Labour Day Observation in Grappler Inlet. Happy fisher-folk cruising by to the boat launch, large ice-chests balanced on the bows of their boats. A great haul.

A close call, when Steven Smith (Anacla) had to present his award winning salmon (22 pds) in Port Alberni before 3 pm, he arrived at 2:56! Duane Nookimus (Bamfield), was the second Monday winner (21 pds), The overall winner of the Labour Derby was Dan Sexton (23 pds). Dan won in 1998 (43 pds). Seems like logged trees, salmon are getting smaller. Alberni Valley News.



Bamfield's best news. Four unanchored Bamfielders purchase the Lars' retreat. Happily mortgaged, **Olivia Walker & Tom Campbell** (below) and **Shannon Mendt & Reid Yokum** take up residence. This type of activity anchors Bamfield as well. Happy tenancy, you four, and happy lives. *L. Druehl*

Hang in there, fishes. Salmon in a holding pattern in the shade of the Blenheim bridge waiting for rain. Photo *R. Hopkins*. p.s. observed 10 days later, not looking so good.



"What did we do to deserve this?"

Submissions are welcome. They may be edited for clarity and taste, and should be brief. All submissions must have the author's name. Submit to ldruehl@island.net. *The New Bamfielder* is free but we encourage readers to contribute to Bamfield Community School Assoc. youth programs. Louis Druehl



Reality Check. The **Hyslop** family from Canberra, Australia seek shade under a Pachena Beach palm tree.



Bamfield Treasure. School bottle drive Bonanza? Bins of 'dimes' that were paid to merchants and now lost, or a school fieldtrip?. Photo: Bamfield Recycle.



Corn on the cob harvested at West Park Community Gardens by **Julek Chawarski** and **Jasmin Schuster** yielded a round dozen cobs enjoyed with warm butter. *H. Washburn*

90 minutes of Community Affairs, attended by 33 folks, first heard **Randy Thoen**, ACRD Fire Smart who gave locally relevant advice on how to protect your Bamfield home from wildfire. Essentially, clear combustibles from outside your home, including litter in your eyes troughs. He will visit your place and advise. There may be grant monies. Regional Director **Bob Beckett** called attention to visits by our MLA, **Josie Osborne**, and **Daniel Sailland** CAO ACRD; congratulated **Sheryl Mass** on new playground; and noted the formation of a road committee to consider alternative routes out of Port Alberni. **Sheryl Mass** (Bamfield Parks) thanked all who made the new playground possible (see www.bamfielder.ca, Sheryl's notes) and noted next project to be rejuvenation of the info/gift shop/WC centre. **Robin Schmitt** advised there are now 45 students. **Jaslyn Haberl**, Community School Association, outlined the myriad of activities available (see Association Calendar). **Nancy Hendry** gave second reading of her grant-in-aid Songwest. A letter from BCAS & Road Safety to be sent to ACRD, MOF, RCMP, MOT, our MLA & MP outlining concerns with new road (motion by **B. Wyton** s/**J. Teversham**). *Abstracted from J. Teversham*

A great day (10 September) in the Eileen Scott Centennial Park when **Eileen Scott** cut the ribbon on the new Eileen Scott Playground. **Sheryl Mass** profusely thanked the great number of folks who made this possible (see www.bamfielder.ca, Sheryl's Notes). The park elements costing \$100K provided by ACRD from a Gas Tax fund, was supplemented by \$30K of volunteered labour. The wonderful assortment of playground devices were gleefully demonstrated by several kids, some who swung **REALLY HIGH**. All in attendance enjoyed the show, the kids, the companionship and **Aneri Garg's** rich chocolate cake. A very fine Bamfield event. *L. Druehl, photo Eileen Scott, Sheryl Mass, Michael McGregor ACRD, by Heather Thompson ACRD Also see Rich Palmer's video of the construction at www.bamfielder.ca*



Doe and twin fawns seek refuge on marine station campus after assaulting the **S. & K. Jennings'** sweet pea patch. Photo *R. Hopkins*



Welcome, The Big House

Photo, Amy McConnell



RIP, Chimo

Housing in (Double-wide Mobile Home, christened **The Big House**) and housing out (**Chimo**), that was brought to the marine station in the 1970s, an abandoned loggers bunk house. For its first years it occupied the Whale Lab space. For approximately 45 years, Chimo served researchers, students and staff. Good re-use, BMSC! *L. Druehl*

Inland Sea Scholar Bert Webber and his wife **Sue** visit the Bamfield Marine Sciences Centre and discuss things marine with **L. Druehl**. Bert spent decades understanding what is collectively known as the Salish Sea (a name he proposed to include the Str. Georgia, Puget Sd. & part of the Str. Juan de Fuca). *L. Druehl, photo by Luke Andersson BMSC.*



THE BAMFIELD COMMUNITY SCHOOL ASSOCIATION PRESENTS
OUR ELEVENTH ANNUAL FUNDRAISER

Oysters, Authors & Ales

SATURDAY OCTOBER 14

AT BMSC'S RIX CENTRE FOR OCEAN DISCOVERIES.
PLEASE JOIN US FOR ANOTHER SPECTACULAR EVENING IN SUPPORT OF OUR LITERACY INITIATIVES & COMMUNITY PROGRAMS

FEATURING:
- AUTHOR ANN ERIKSSON - POET GARY GEDDES -
- TALENTED LOCAL CONTRIBUTORS -

BEER SUPPLIED BY
- WHISTLE BUOY BREWING COMPANY -

TICKETS ON SALE NOW

530 TICKETS INCLUDE:
2 OYSTERS, 1 BEER,
1 DOOR PRIZE TICKET
THIS EVENT IS 19+ ONLY

TO PURCHASE TICKETS OR DONATE
SILENT AUCTION ITEMS, PLEASE EMAIL:
BSCSA.COORDINATOR@GMAIL.COM
OR CALL (250) 728-1220

